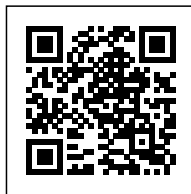


ALTAN TSAGAAN OVOO “ATO” GOLD MINE

Posted on June 9, 2022 by Steppe Gold Limited



Category: [Public listed companies](#)



The Altan Tsagaan Ovoo gold and silver project (the “ATO Project”) is located in the territory of Tsagaan Ovoo soum of Dornod province in eastern Mongolia. The ATO Project is comprised of one mining license (MV-017111) over an area of 5,492.63 hectares.

After a successful start to Phase 1 Oxide Project, with 33,000 ounces produced in 2020, Steppe Gold doubled the resource estimate at the ATO Gold Mine to 2.45 million ounce of gold equivalent in February 2021.

The Feasibility Study dated in Q4’ 2021 covers the ATO Gold Mine with a 12.5 year remaining mine life, with an assumed start date of January 1, 2022.

Phase 2 expansion assumes producing 100,000 ounces of gold equivalent per annum from the fresh rock ore. Gold recovery is forecast to be 79%, with further recoveries of up to 10% through CIP/CIL plant in later years.

ATO gold mine is estimated to generate 1.72 billion dollars in revenue and over 584 million dollars in earnings before taxes with a CAPEX of \$128m, a rapid payback of capital in 3 years after taxes.

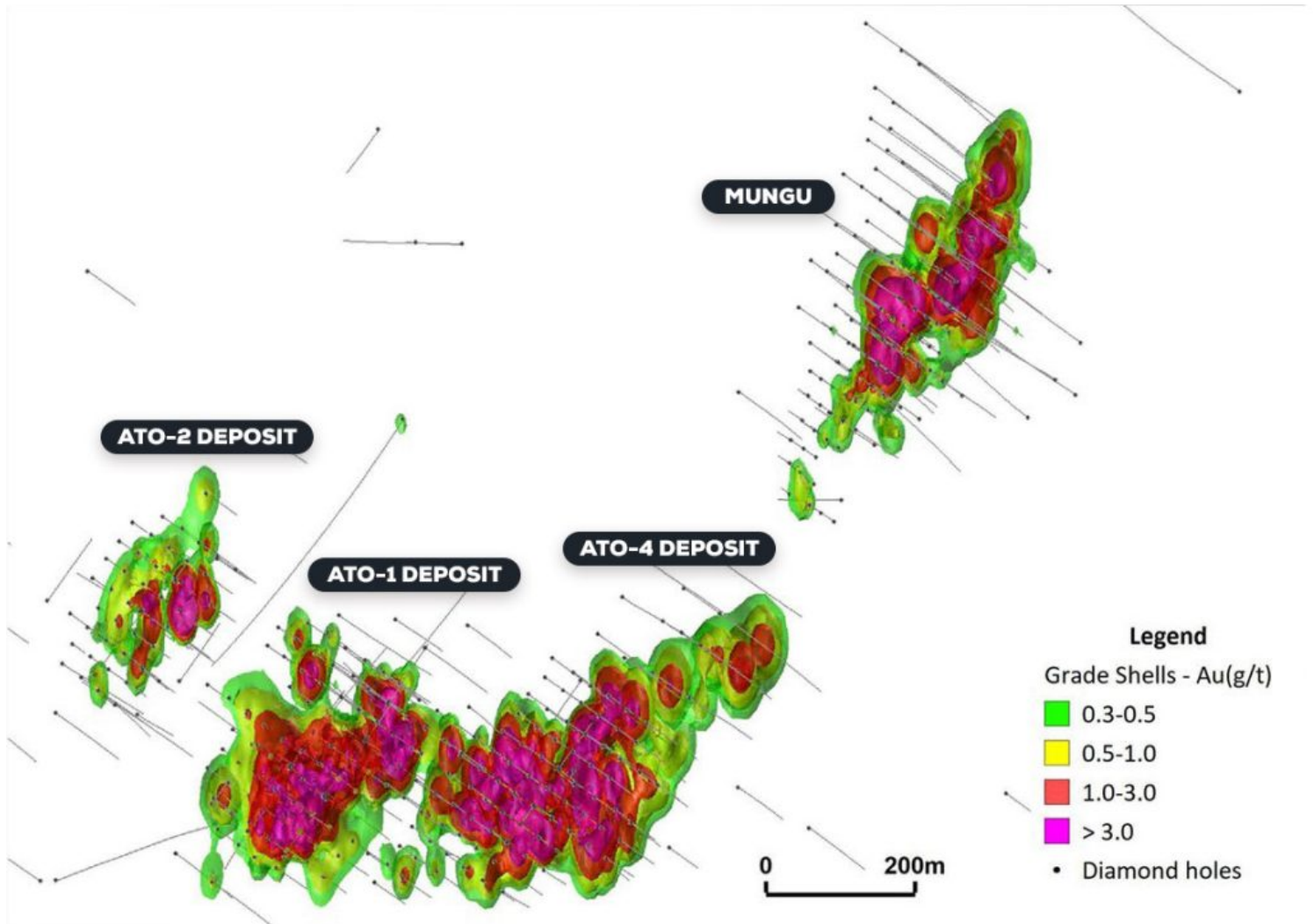
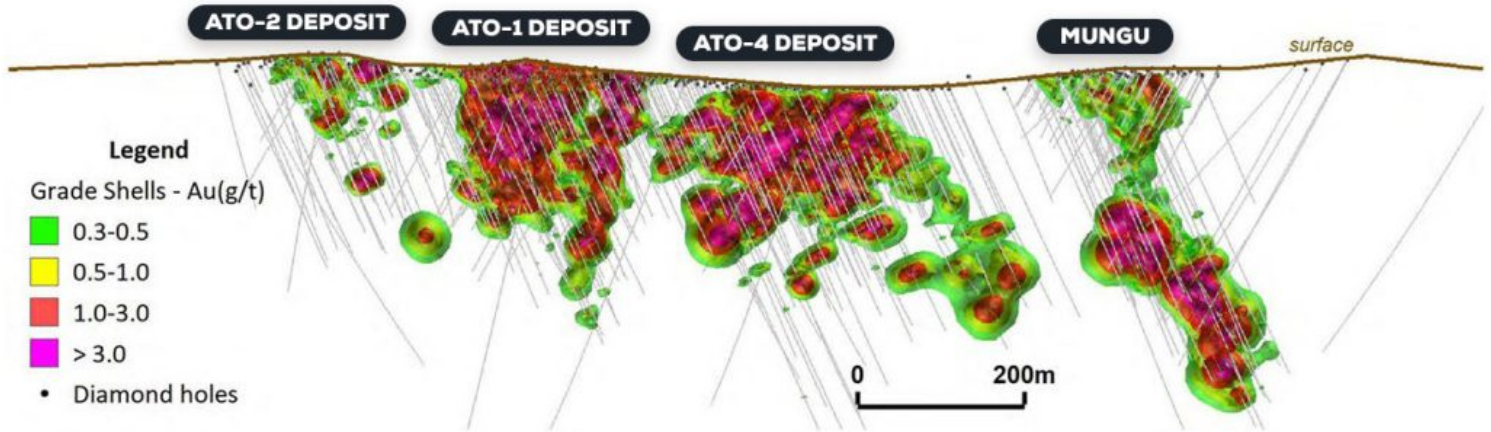
MINERAL RESERVE ESTIMATE, EFFECTIVE JUNE 30, 2021

Category	Material	Ore	Grades					Contained Metal		
			AuEq	Au	Ag	Pb	Zn	Au	Ag	AuEq
		(kt)	(g/t)	(g/t)	(g/t)	(%)	(%)	(k oz)	(k oz)	(k oz)
Oxide – Combined (ATO and Mungu)										
Proven	Oxide	1,618	1.54	1.45	12.81	0.54	0.40	75	666	80
Probable	Oxide	1,324	1.16	1.01	19.45	0.26	0.20	43	828	49
Total		2,942	1.37	1.25	15.8	0.41	0.31	118	1,494	130
Fresh & Transition – Combined (ATO and Mungu)										
Proven	Fresh & Transitio	13,277	2.10	1.26	8.58	0.53	0.94	536	3,657	897
Probable	Fresh & Transitio	10,186	1.69	0.98	13.79	0.37	0.69	316	4,344	550
Total		23,462	1.93	1.14	10.78	0.46	0.84	849	8,002	1,448
Total Oxide+Fresh & Transition		26,404	1.86	1.14	11.18	0.46	0.78	968	9,491	1,579

Category	Material	Ore	Grades					Contained Metal		
			AuEq	Au	Ag	Pb	Zn	Au	Ag	AuEq
		(kt)	(g/t)	(g/t)	(g/t)	(%)	(%)	(k oz)	(k oz)	(k oz)
Combined (ATO and Mungu)										
Proven	Oxide	1,618	1.54	1.45	12.81	0.54	0.40	75	666	80
	Fresh & Transition	13,277	2.10	1.26	8.58	0.53	0.94	536	3,657	897
Probable	Oxide	1,324	1.16	1.01	19.45	0.26	0.20	43	828	49
	Fresh & Transition	10,186	1.69	0.98	13.79	0.37	0.69	316	4,344	550
Proven & Probable	Oxide	2,942	1.37	1.25	15.80	0.41	0.31	118	1,494	130
	Fresh & Transition	23,462	1.93	1.14	10.78	0.46	0.84	849	8,002	1,448
Total		26,404	1.86	1.14	11.18	0.46	0.78	968	9,491	1,579

RESOURCE EXPANSION

LOOKING NORTH WEST



SITE PLAN

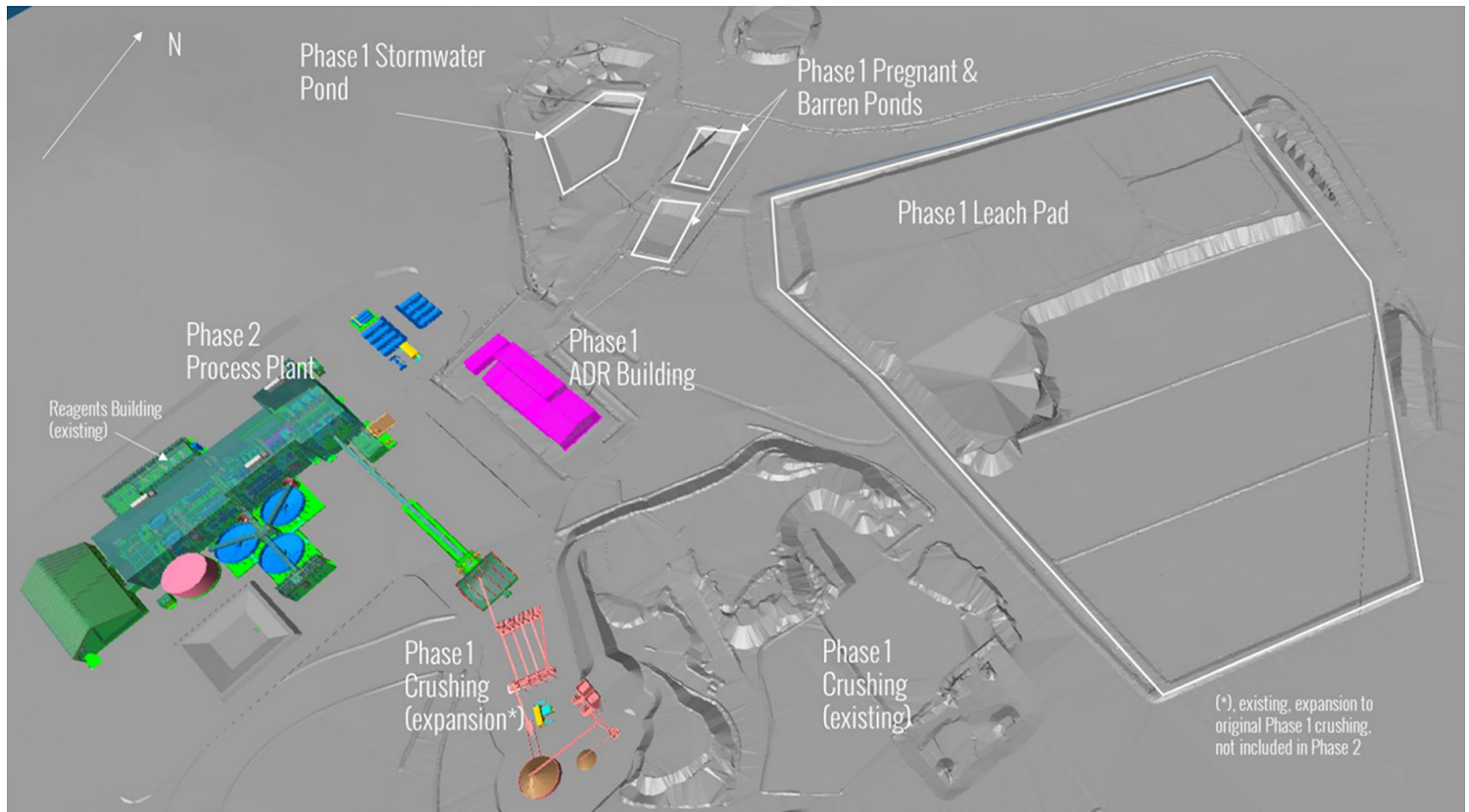


IMAGE OF EXISTING ATO PROJECT SITE AS OF NOVEMBER 2021

