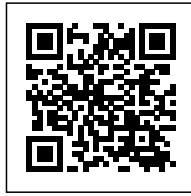


BAAVHAI UUL LITHIUM BRINE

Posted on June 9, 2022 by Ion Energy Ltd.



Category: [Public listed companies](#)



With one of the largest exploration licences in Mongolia, ION Energy is poised to become a significant player in Asia's booming Lithium market.

ABOUT THIS PROJECT

- 80,000+hectares, highly prospective for Lithium brine.
- Average grade 426ppm Lithium. Max grade 811ppm Lithium.
- Low Potassium and Magnesium ratios.
- High evaporation and low precipitation endorheic basin, no outflow to external bodies of water.
- All holes drilled contain significant levels of Lithium

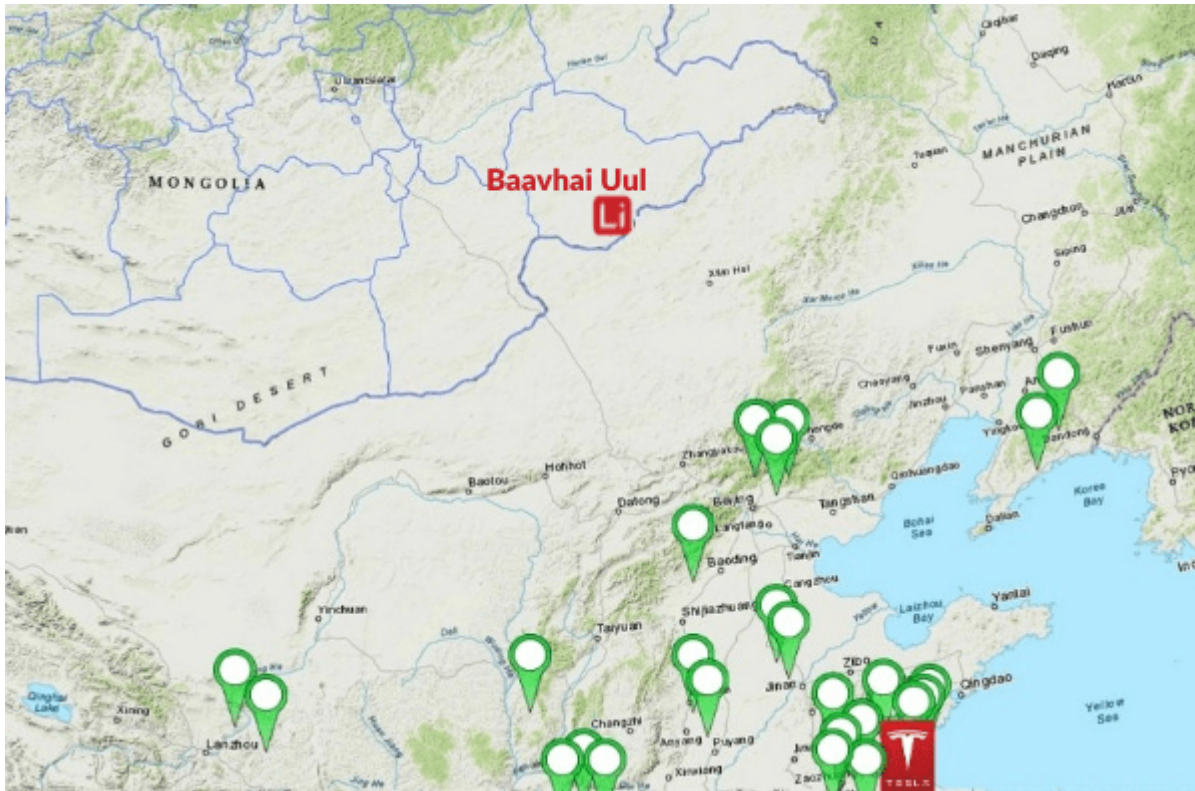
Large Land Package

Grade

Favourable Geochemistry

Favourable For Production

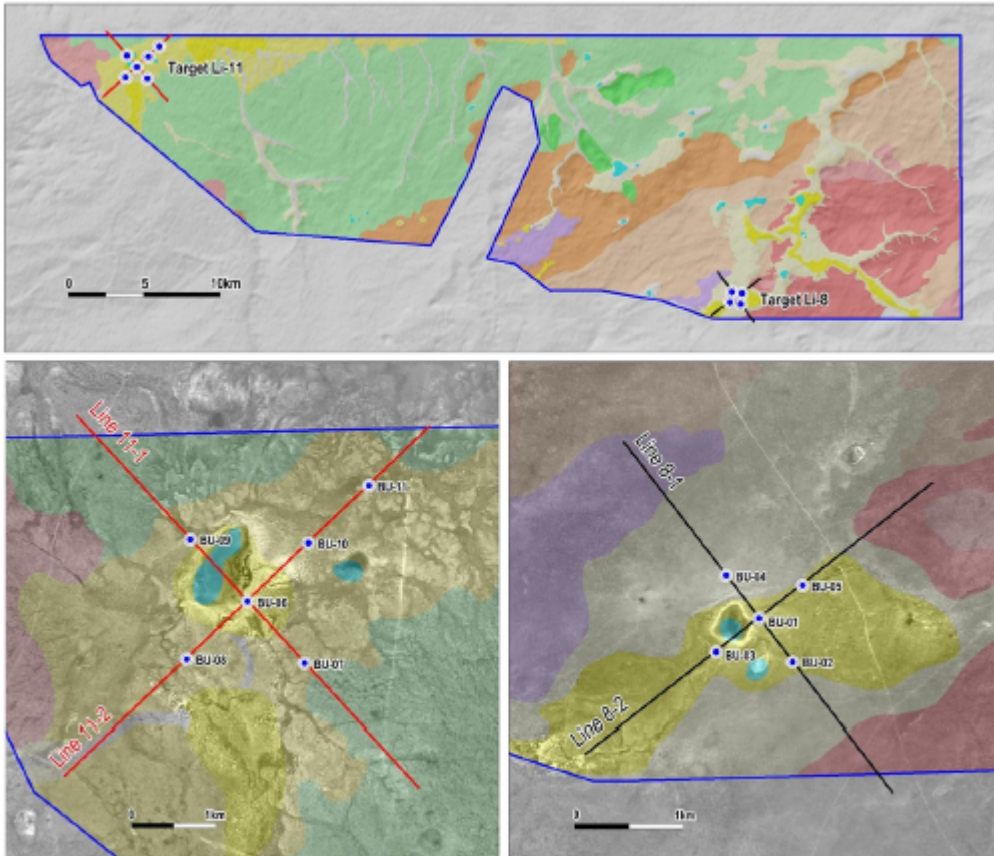
THE LOCATION



GEOLOGICAL PROFILE

- Low potassium and magnesium ratios: favourable for large crystal formation at licence altitude and temperature.
- Aquifers about 20m below surface: Cretaceous volcanic and sedimentary rocks are the most suitable aquifer for the enrichment of lithium (light green areas).
- Brine vs hard rock sources = lower production costs.
- Gobi Desert: arid environment with high evaporation rates

EXPANDED EXPLORATION UPDATE: ANNOUNCED MAY 2021



Proposed Shallow Refraction Seismic Survey lines and drill hole location at Baavhai Uul project.

- Initial geophysics successfully completed with early encouraging results.
- Expanded exploration program to commence: the first drilling for lithium salars ever in Mongolia.
- Will include the drilling of 21 drill holes through the highlighted prospective basins.
- Sampling of sediments and aquifers will be completed during the drilling phase.

Positioning Relative to the Third Largest Salt Flat in the World

Wealth Minerals Owns a Portion of Chile's Atacama Salar

BHP

MC: US\$152.11B



MC: US\$27.93B
Operate Lithium-Potassium Facility



MC: US\$15.08B



MC: US\$71.99mm

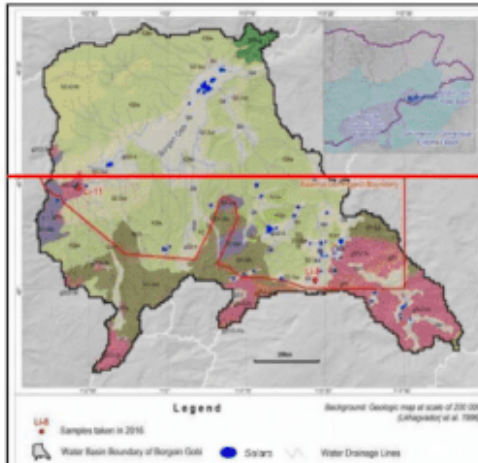


Atacama Salar Overview	
Total Atacama Salar Land Package (ha)	300,000
Total Atacama Salar Max. Lithium Grade (ppm)	1,840
Wealth Minerals Land Package (ha)	46,000
Wealth Minerals Max. Lithium Grade in Chile (ppm)	1,250
Wealth Minerals Exploration to Date	Limited to Surveying
Proximity to Largest Market (China)	~15,000+ Nautical Miles

Ion Energy Owns the Entire Baavhai Uul Basin in Mongolia



MC: US\$20.71mm



Northern Portion of the Basin Not Available for Tender or Mining

Ion Energy Own's 100% of the Basin Available for Mining

Ion Energy Portfolio Overview	
Baavhai Uul Land Package (ha)	81,759
Additional Land Owned by Ion Energy (ha)	29,000
Total Land Package Owned by Ion Energy (ha)	100,000+
2016 Sampling Max. Lithium Grade (ppm)	811 ¹
Ion Energy Exploration to Date	Surveying, Sampling, & 800+ m of Drilling
Proximity to Largest Market (China)	30 km

Source: Company Disclosures

Note: The map presenting Ion Energy does not include the additional land package of its Uqash Naran project. Valuations effective as of September 7th, 2021

1. From Two Drill Holes

PI FINANCIAL
experience. driven.